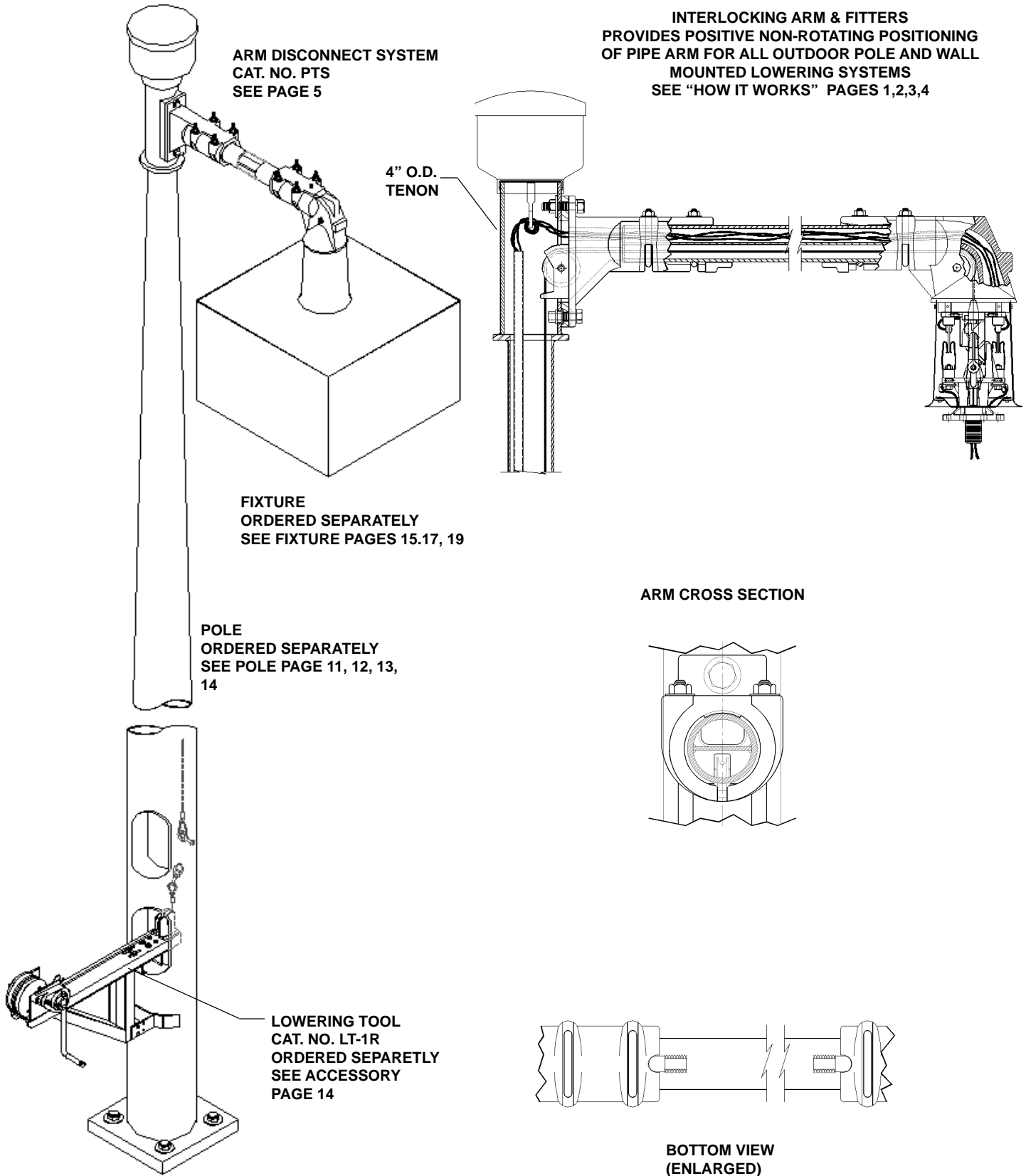


POLE MOUNTING SYSTEM





MANUAL SYSTEM ORDERING FORM

FOR POLE INSTALLATION

1. Pole configuration (please check one):

- Round Tapered Pole (RT)
- Round Straight Pole (RS)
- Square Tapered Pole (ST)
- Square Straight Pole (SS)

2. Pole material specification:

- Steel (S)
- Aluminum (A)
- Concrete (C)
- Fiberglass (F)

3. Number of arms on pole: _____

*Note: Maximum number of Arms per pole: 8
Pole top tenon diameter changes accordingly.*

4. Pole height: _____

5. Finish - Steel Poles:

- Painted Bronze (BRZ)

Optional:

- Galvanized (GV)
- Painted (Specify Color) _____

Finish - Aluminum Poles:

- Natural (NAT)

Optional:

- Clear Anodize (ANCL)
- Bronze Anodize (ANBZ)
- Painted (Specify Color) _____

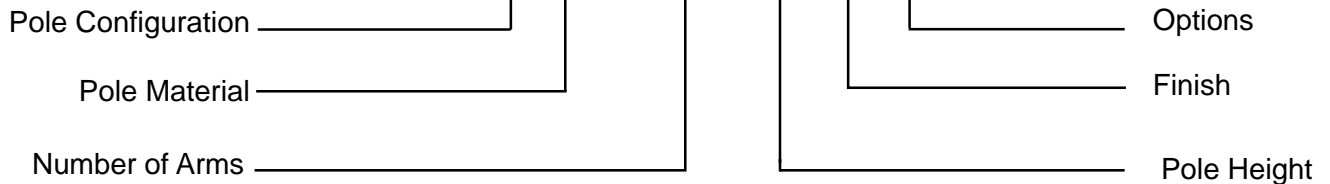
***Consult factory for concrete and fiberglass pole finishes.*

6. Pole Options:

- Nut Covers (NC)
- Base Covers (BC)
- Transformer Base (TB)
- Other

Example Catalog Number:

RT-S-PTS-2-90-30-GV-BC

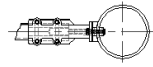
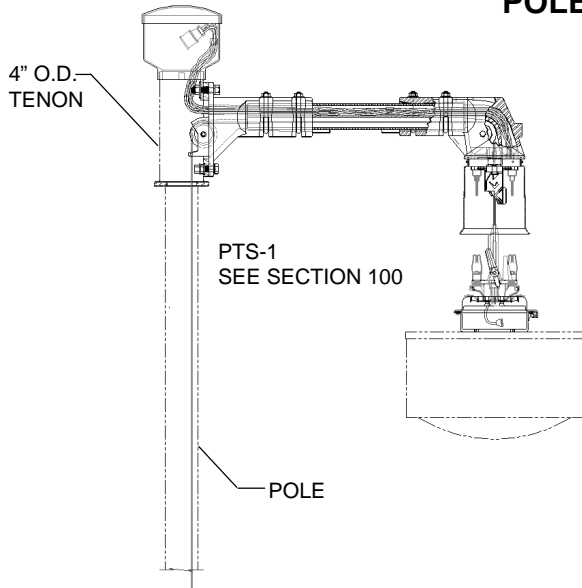


Example defined: Round Tapered, Steel, 2-Arms, 30' Pole Height, Galvanized & Base Cover.

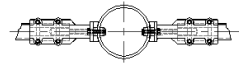
POLE MOUNTED SYSTEM

ORDERING EXAMPLE

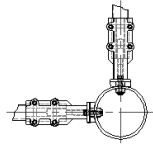
POLE ARM ARRANGEMENT



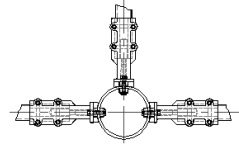
PTS-1



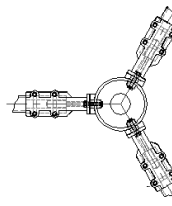
PTS-2-180



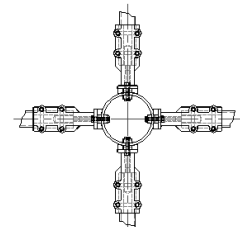
PTS-2-90



PTS-3-90



PTS-3-120



PTS-4-90

FEATURES

1. Mounts to 4" O.D. Tenon, welded to top of pole.
2. Use stainless steel mounting hardware.
3. Cast aluminum fitters are flat on top to aid leveling.
4. Cable stop block included to assure trouble free operation.
5. Divided pipe is galvanized.

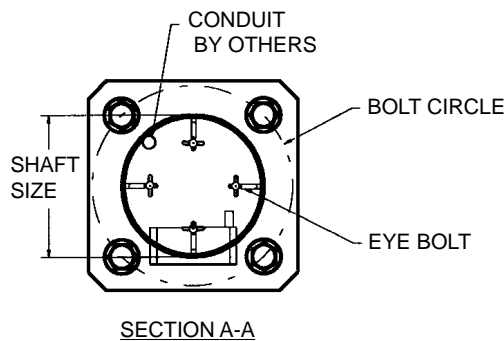
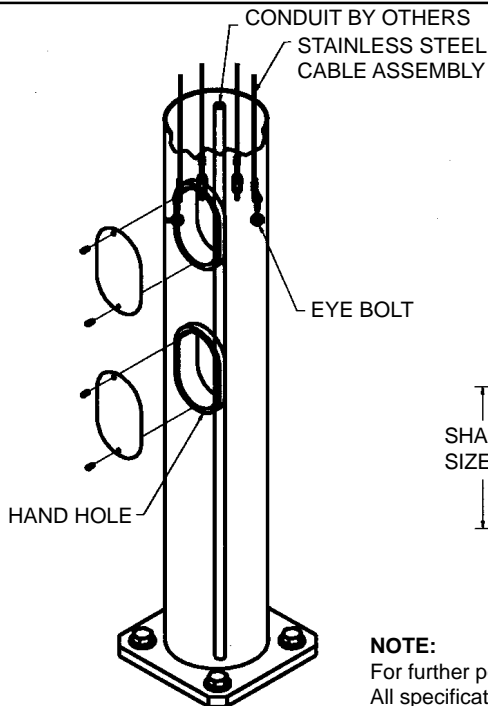
FINISH OPTION

1. Painted _____ (indicate color)

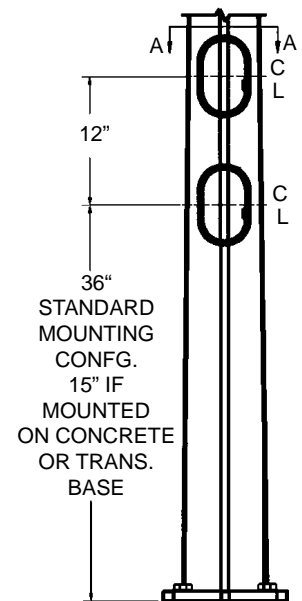
NOTE

1. Maximum of 8 arms per pole, pole top tenon dia. changes accordingly

BOTTOM OF POLE SPECIFICATIONS



NOTE:
For further pole specifications contact factory.
All specifications subject to change without notice.

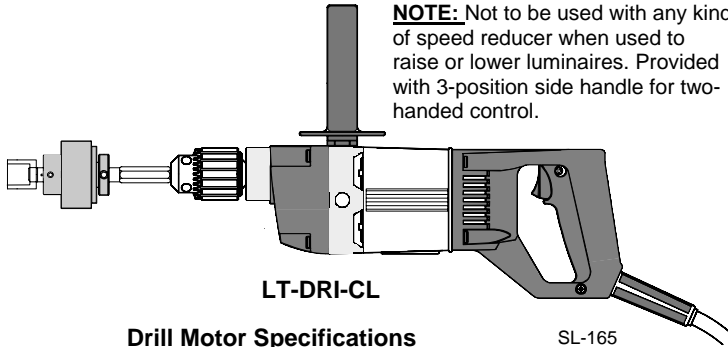




LOWERING TOOLS AND CONTROL CABLE ASSEMBLIES

All gearboxes and lowering tool frames are of heavy-duty design to provide reliability, long life, and ease of operation. They incorporate solid steel heat-treated gears for maximum durability and strength. All are equipped with a special automatically actuated disc brake for better load holding ability and the prevention of the load free wheeling. They are essential for lifting operations. Available for permanent installation or portable use indoors or outdoors for wall mounting, tower mounting, or pole mounting. Each system is custom tailored to work with required load and operation of the raising and lowering specifications.

NOTE: Not to be used with any kind of speed reducer when used to raise or lower luminaires. Provided with 3-position side handle for two-handed control.



LT-DRI-CL

SL-165

Drill Motor Specifications

- Drill is 1/2" double insulated, heavy duty, reversible, variable speeds, with 'D' handle.
- Chuck size is 1/2" key chuck with key.
- Electrical-Nom. 5 amp universal motor 115v.AC
- Torque-Develops nominal 170 lbs.-in.
- Speed/HP-.5 H.P. No load speed of 350 RPM
- Overall length is 15-1/8"
- Weight: Approx. 7lbs. 6oz.

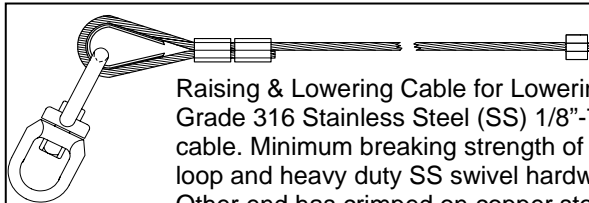
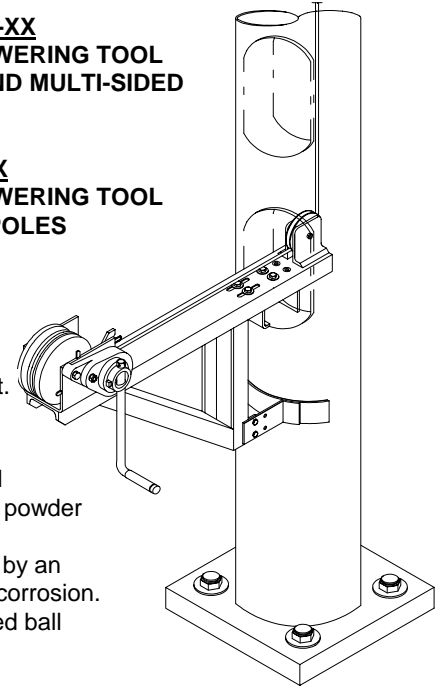
Overload Clutch Specifications

- Lubricated ball indent-totally enclosed-adjustable torque limiting.
- Coil spring type. Varied quantities depending on torque range. Torque range: 60 to 300 lb./in.
- Winch drive is 1-1/8" hex socket with 1/2" sq. drive.
- Max. operating speed is 350 RPM
- Dimensions of clutch: 1 1/2"Dia., 1 5/8"L. Overall, 8 1/2"L
- Hub shaft: 3/8" sq. w/spring loaded pin (clutch end).
- Socket shaft: 3/8" sq. w/spring loaded retaining pin.

- Open-end wrench type torque-adjusting nut. Snap ring tool included with clutch.
 - Clutch weight: 2 lbs.
- Specifications on Lowering Tool**
- Fabricated from heavy gauge steel w/black powder coat finish.
 - The winch has a primer base coat followed by an enamel finish coat. Excellent resistance to corrosion.
 - Oil impregnated bronze bushings and sealed ball bearings.
 - All hardware is made out of stainless steel.
 - Winch comes with heavy-duty disk brake to afford greater load holding ability. Freewheeling cannot be had with the disc brake.
 - For drum capacity, see different models below.
 - **Dimensions:** 29"L.x8"W. With handle, 12"W.
 - **Weight:**34LBS.

CAT. NO LT-CC-XX
PORTABLE LOWERING TOOL FOR ROUND AND MULTI-SIDED POLES

CAT. # LT-1S-XX
PORTABLE LOWERING TOOL FOR SQUARE POLES



Raising & Lowering Cable for Lowering Tool. Made of Marine Grade 316 Stainless Steel (SS) 1/8"-7x19 preformed aircraft cable. Minimum breaking strength of 1760 lbs. Comes with loop and heavy duty SS swivel hardware cable attachment. Other end has crimped on copper stop.

Catalog # (with Lowering Tool cable length)	Min Load Lbs.	Drum Capacity	Max Load Lbs.
LT-CC-XX (round poles)	16	125 ft.	300
LT-CC-XX (round poles)	16	250 ft.	300
LT-1S-XX (square poles)	16	125 ft.	300
LT-2S-XX (square poles)	16	250 ft.	300

CATALOG NO.	OPTIONS DEFINITION
LT-DRI-CL	Drill Motor with clutch and mounting adapter kit for up to 300 lb. loads.

* All Lowering Systems gear boxes and lowering tools are designed for material handling usage only.
 * Not for lifting people, or things over people.
 * Specifications subject to change without notice.