

SERIES 300

HIGH PERFORMANCE OUTDOOR WELDED LUMINAIRE

SERIES 300 SPECIFICATION

Series 300 is a 24 inch square welded aluminum housing with vertical burning lamp (horizontal lamp with forward throw). The ballast is mounted on a removable tray for effortless installation and maintenance. Available in 250 to 1000 watt high pressure sodium lamp, or 250 to 1000 watt metal halide lamp. Available with (specify) 120, 208, 240, 277, 480 volt, or 4MT (120,208,240,277V) 60Hz ballast. Luminaire shall be completely pre-wired for ease of installation.

BASIC PRODUCT DESCRIPTION

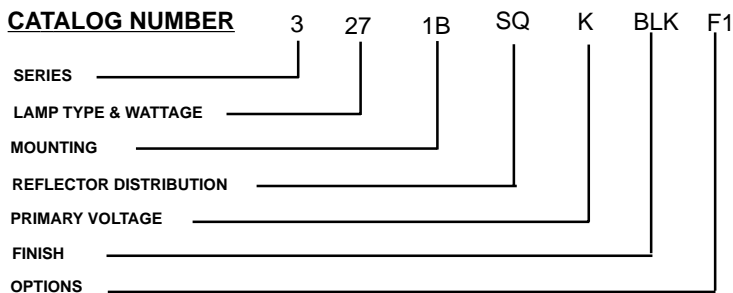
Housing sides and top shall be made of heavy gauge seamless welded aluminum. A one piece reinforcing bracket is used for reinforcement and component mounting. The standard finishes are dark Bronze (BRZ), Silver (SLV), Black (BLK) and White (WHT). All standard finishes are powder coat paint. Other finishes are also available. The tempered convex lens is thermal shock and impact resistant. Lamp stabilizer provided with 1000 watt lamps. Its unique dacron gasketed filtering system allow luminaire to breathe, keeping ballast cooler and the optical system cleaner.

BALLAST CHARACTERISTICS

The Series 300 shall contain a U.L. recognized High Power Factor, constant wattage auto-transformer type ballast. Will start and operate lamp down to -20°F (-30°C) for metal halide and -40°F (-40°C) for high pressure sodium. Mercury vapor lamps may be used in metal halide fixtures. For availability of 220/240V 50Hz ballast - consult factory.

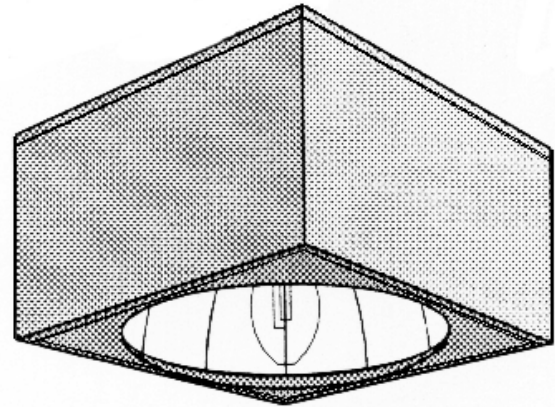
ORDERING INFORMATION

Example:



LAMP TYPE	SUFFIX
250 Watt MH	26
400 Watt MH	27
1000 Watt MH	29
250 Watt HPS	16
400 Watt HPS	17
1000 Watt HPS	19

LIGHT DISTRIBUTIONS	SUFFIX
Square	SQ
Rectangular	RT
Symmetrical	SY
Forward Throw	FT



REFLECTOR ASSEMBLY

Using various rotating optical systems this series is able to provide square, rectangular, forward throw, or symmetrical pattern cut-off light distributions. The square, rectangular, and symmetrical reflector system utilizes eight optically designed contoured, faceted, segmented electro-chemically brightened anodize aluminum reflectors to form the main beam. These reflectors are designed to produce peak candlepower at 65 degrees, while minimizing the candlepower under the pole, in the 0 to 30 degree range, which produces maximum uniformity.

MOUNTING ARM*	SUFFIX
Ex. Slip Fit	AX
Int. Slip Fit	BX
Suspension	DX
Yoke Mnt.	YX
Post Top Mnt.	EX
6" Arm Mnt.	1B
6" w/1.2"R.	1B1.2
6" w/1.4"R.	1B1.4
6" w/1.6"R.	1B1.6
6" w/1.8"R.	1B1.8
6" w/2.0"R.	1B2.0
12" Arm Mnt.	2B
12" w/1.2"R.	2B1.2
12" w/1.4"R.	2B1.4
12" w/1.6"R.	2B1.6
12" w/1.8"R.	2B1.8
12" w/2.0"R.	2B2.0

FINISH	SUFFIX
Bronze	BRZ
White	WHT
Silver	SLV
Black	BLK

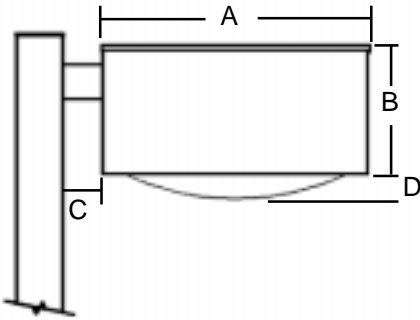
PRIMARY VOLTAGES	SUFFIX
120 Volts	G
208 Volts	H
240 Volts	J
277 Volts	K
480 Volts	L
Quad Volt	M

OPTIONS	SUFFIX
120/277 V Fuse	F1
208/240 V Fuse	F2
480 V double Fuse	F3
Photo cell	PX
Terminal Block	TB

SERIES 300

MOUNTING ARRANGEMENTS

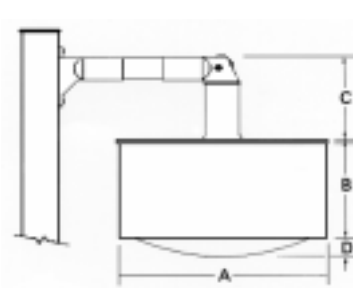
ARM MOUNT (1B, 2B)



DIMENSIONAL DATA		
DIM	1000W	250W & 400W
A	22-1/2"	22-1/2"
B	18"	11-3/4"
C	6" or 12"	6" or 12"
D	3-1/2"	3-1/2"
EPA	3.98 sq. ft.	2.81 sq. ft.
WEIGHT	63 lbs	51 lbs

Extruded aluminum arm, 6" or 12" long and 2" wide. For round poles, we must be notified for the radius of the pole.

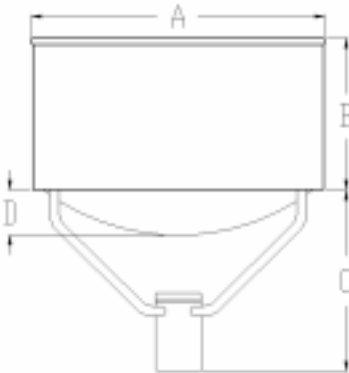
SUSPENSION CONTACT MOUNT (DX)



DIMENSIONAL DATA		
DIM	1000W	250W & 400W
A	22-1/2"	22-1/2"
B	18"	11-3/4"
C	13-1/2"	13-1/2"
D	3-1/2"	3-1/2"
EPA	3.73 sq. ft.	2.56 sq. ft.
WEIGHT	60 lbs	48 lbs

Cast aluminum flange with keyway to accept SCU-1A suspension contact unit (ordered separately)

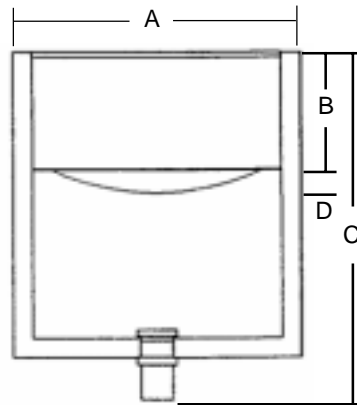
POST TOP MOUNT (EX)



DIMENSIONAL DATA		
DIM	1000W	250W & 400W
A	22-1/2"	22-1/2"
B	18"	11-3/4"
C	14"	14"
D	3-1/2"	3-1/2"
EPA	3.85 sq. ft.	2.81 sq. ft.
WEIGHT	65 lbs	57 lbs

A cast aluminum fitter to slip over a 2" tenon (2-3/8" O.D.), pre-wired for easy installation.

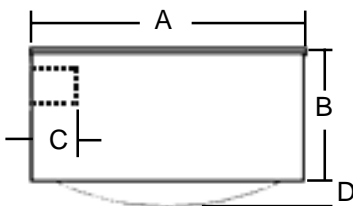
YOKE MOUNT (YX)



DIMENSIONAL DATA		
DIM	1000W	250W & 400W
A	22-1/2"	22-1/2"
B	18"	11-3/4"
C	41-1/2"	35-1/4"
D	3-1/2"	3-1/2"
EPA	5.61 sq. ft.	4.22 sq. ft.
WEIGHT	65 lbs	57 lbs

Heavy gauge steel square tubing welded to fitter to slip over 2" tenon (2-3/8" O.D.), pre-wired for easy installation.

INTERNAL SLIP FITTER MOUNT (BX)

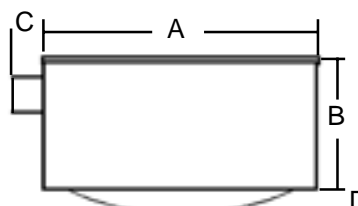


1000W Internal Fitter

DIMENSIONAL DATA		
	AX	DAX
DIM	1000W	250W & 400W
A	22-1/2"	22-1/2"
B	18"	11-3/4"
C	5-3/8"	5-3/8"
D	3-1/2"	3-1/2"
EPA	3.73 sq. ft.	2.56 sq. ft.
WEIGHT	60 lbs	48 lbs

Accepts 2" pipe (2-3/8" O.D.). Pole bracket not included. For bracket ordering information, see page 16

EXTERNAL SLIP FITTER MOUNT (AX)



250W & 400W External Fitter

DIMENSIONAL DATA		
DIM	250W & 400W	
A	22-1/2"	
B	11-3/4"	
C	5-1/4"	
D	3-1/2"	
EPA	2.56 sq. ft.	
WEIGHT	48 lbs	

Accepts 2" pipe (2-3/8" O.D.). Pole bracket not included. For bracket ordering information, see page 16