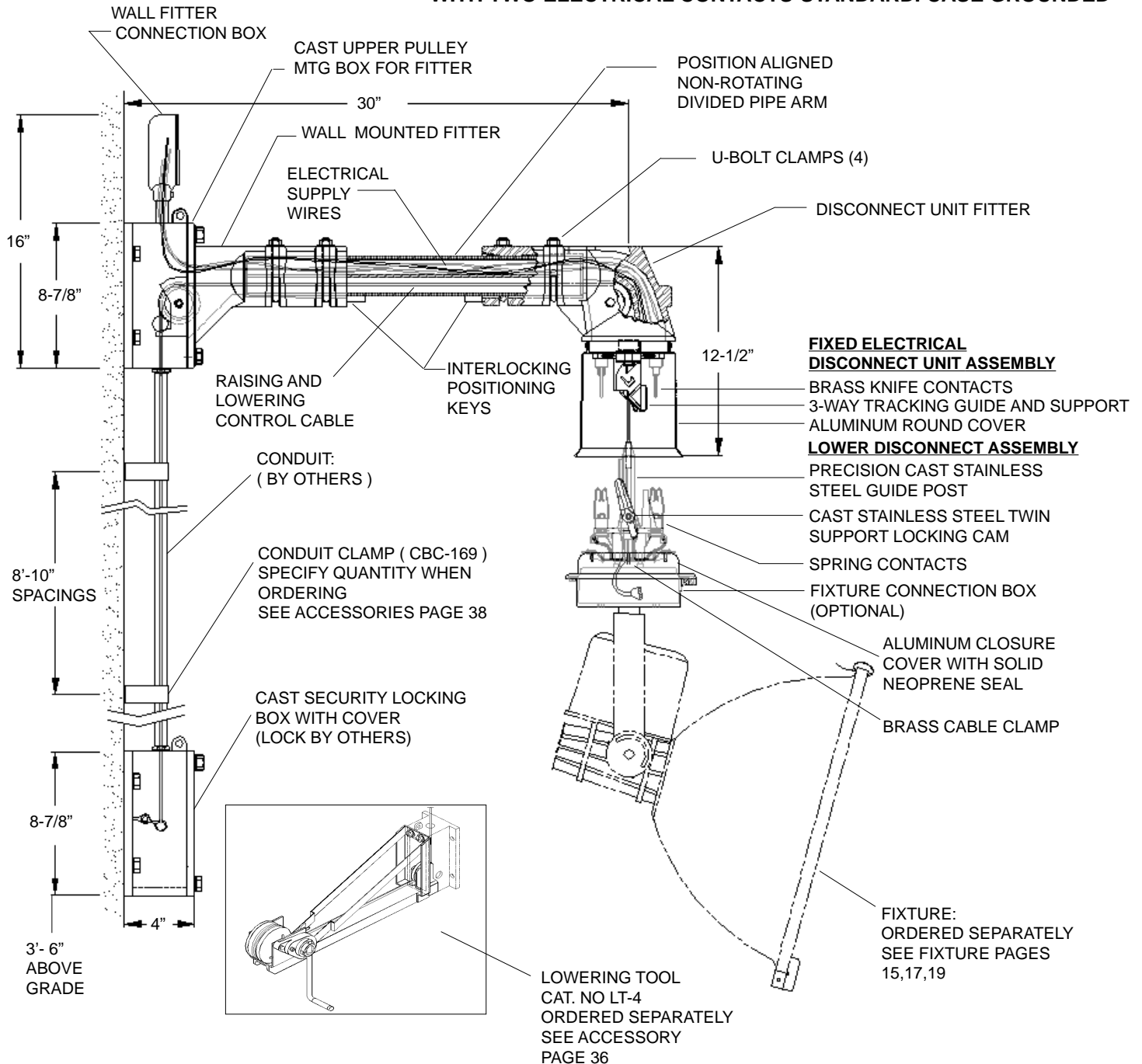


Arm and Disconnect Unit for Wall Mounting
SYSTEM LOAD CAPACITY OF 200 LBS. DISCONNECT UNIT WITH TWO ELECTRICAL CONTACTS-STANDARD. CASE GROUNDED


OPTIONS:	SUFFIX
(3) CONTACTS	3C
(4) CONTACTS	4C
ADD-ON WEIGHTS	CW
STAINLESS STEEL COVER	HD
BRONZE PAINTED	BRZ
SILVER PAINTED	SLV
BLACK PAINTED	BLK

CONSULT FACTORY FOR OTHER FINISHES

UL & CUL LISTED 277/240/208 V. 15 AMP.&120V. 20AMP AC PER CONTACT

EPA: 1.13 SQ.FT. (LESS FIXTURE, WALL CONNECTION BOX AND SECURITY LOCKING BOX.)

STANDARD FINISH: NATURAL ALUMINUM.

MINIMUM LOAD: 20 LBS.

WEIGHT: 32 LBS.

WARNING: NOT FOR LIFTING PEOPLE OR THINGS OVER PEOPLE.

SPECIFICATIONS SUBJECT TO CHANGE WITHOUT NOTICE

System Specifications and Ordering Information
SYSTEM SPECIFICATIONS *Design WMS is comprised of the following major assemblies:*
ELECTRICAL DISCONNECT UNIT

3-WAY TRACKING GUIDE AND SUPPORT: Constructed of precision cast high strength aluminum alloy. A permanently fixed position piece incorporating a special tracking guide system, the 'maze', permitting the moveable portion of the Disconnect Unit to align in the same position every time the system is operated thereby eliminating the need to re-orient the fixture. Twin high strength notches secure the load of the *Lower Contact Assembly* and fixture and work with the tracking guide system to assure stability.

ELECTRICAL CONTACTS: Standard electrical disconnect unit equipped with two electrical contacts and means for body and shell grounding.

Upper Fixed Contacts are heavy duty cast brass post type with rectangular cross section.

Lower Contacts move with the light fixture during the lowering operation and are electrically dead when the fixture is lowered. Constructed of spring tempered beryllium copper. Contacts have barrel and set screw wire terminations for 16 AWG-8 AWG. Contact sets are self-cleaning and designed to limit arching when contacts are engaged or disconnected under electrical load.

Insulators are of high dielectric withstanding nylon. They have interlocking features for the precise alignment of the contacts within the disconnect unit.

DISCONNECT UNIT COVER: One piece hydro-spun heavy gauge aluminum. Hydro-spun stainless steel cover optional.

GUIDE POST: Constructed of precision cast high strength stainless steel. Utilizes cast-in-place guide bar for precise alignment of *Lower Contact Assembly* with the fixed portion of the Disconnect Unit.

TWIN TRACKING SUPPORT ARMS: Made of cast high strength stainless steel. Dual arms provide balanced stability of the Disconnect Unit. When locked in the 3-Way Tracking Guide and Support notches, the Twin Tracking/Support Arms hold the weight of the light fixture and components and removes all tension from the Control Cable.

LOWER CONTACT ASSEMBLY: Constructed of precision cast high strength aluminum alloy. Features cast-in-place guide that mates with the fixed portion of the Disconnect Unit to aid in tracking and stability. All hardware used on the Lower Contact Assembly as well as the entire Disconnect Unit is corrosion resistant stainless steel.

WEATHER SEALING GASKET: Extra flexible polymer sealing gasket provides weather-tight seal between Lower Contact Assembly and Disconnect Unit Cover.

DISCONNECT UNIT FITTER

Cast of heavy duty aluminum alloy to fit 2-3/8 inch outside diameter Divided Pipe Arm. Fitter designed to completely isolate moving Control Cable from the electrical wires. A molybdenum impregnated nylon pulley provides high strength and low resistance for the moving Control Cable thereby increasing the life of the cable. Pulley uses permanently lubricated bearing.

DIVIDED PIPE ARM

A 2 inch (2-3/8 inch O.D.) steel pipe with galvanized finish standard. Divided entire length to keep Control Cable and electrical wires separate. Provides rigid support between the Disconnect Unit Fitter and Wall Mounted Fitter. Interlocking arm and fitters provides positive non-rotating positioning of pipe arm for all outdoor pole and wall mounted lowering system. See "How it Works" Section 100.

WALL MOUNTED FITTER

Heavy duty cast aluminum alloy to fit 2-3/8 inch O.D. Divided Pipe Arm. Utilizes cast-in-place cable stop to prevent cable connections from entering pulley. Pulley is molybdenum impregnated nylon. Two U-bolt pipe clamps rigidly hold the Divided Pipe Arm. Fitter box designed to bolt directly to wall. Fitter mounted to heavy duty one piece cast aluminum wall bracket box. Provisions in wall bracket box for installing 3/4" conduit fittings. Fitters mounts to bracket box with 1/2" stainless steel hardware provided.

CONTROL CABLE

Galvanized (or optional stainless steel) 5/32 inch diameter 7 x 19 construction aircraft cable.

FIXTURE CONNECTION BOX

Cast construction with hinging feature for easy wire access. Provides solid mounting for all types of fixtures and variety of accessories using integrated adapter. An electrical quick disconnect allows for easy wire connection. Interface between electrical disconnect unit for wire connections. Box is prewired to electrical disconnect unit's contacts and provided with plug and socket for testing of fixture at ground level before raising fixture to the top.

WALL FITTER CONNECTION BOX

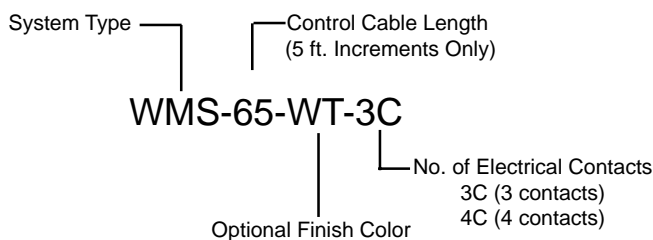
Optional weather-tight connection box.

ELECTRICAL WIRING AND CONNECTORS

Systems are prewired with connectors for easy installation from fixture connection box to wall mounted fitter.

SECURITY LOCKING BOX

Heavy duty cast aluminum housing for storing and terminating control cable end. used as mounting bracket for lowering tool. Comes with cast aluminum lockable cores. (Lock by others) Provisions for 3/4" conduit fittings.

ORDERING INFORMATION


- Design WMS is shipped assembled and prewired.
- Standard System Finish is Raw Aluminum and Galvanized Steel.
- Light Fixture and Lowering Tool ordered separately.
- Fixture Mounting Hardware and hardware to mount fitter to wall by others.

Contact **LIGHTING & LOWERING SYSTEMS** for specific catalog number codes required for your application
NOT FOR LIFTING PEOPLE OR THINGS OVER PEOPLE.
 SPECIFICATIONS SUBJECT TO CHANGE WITHOUT NOTICE.