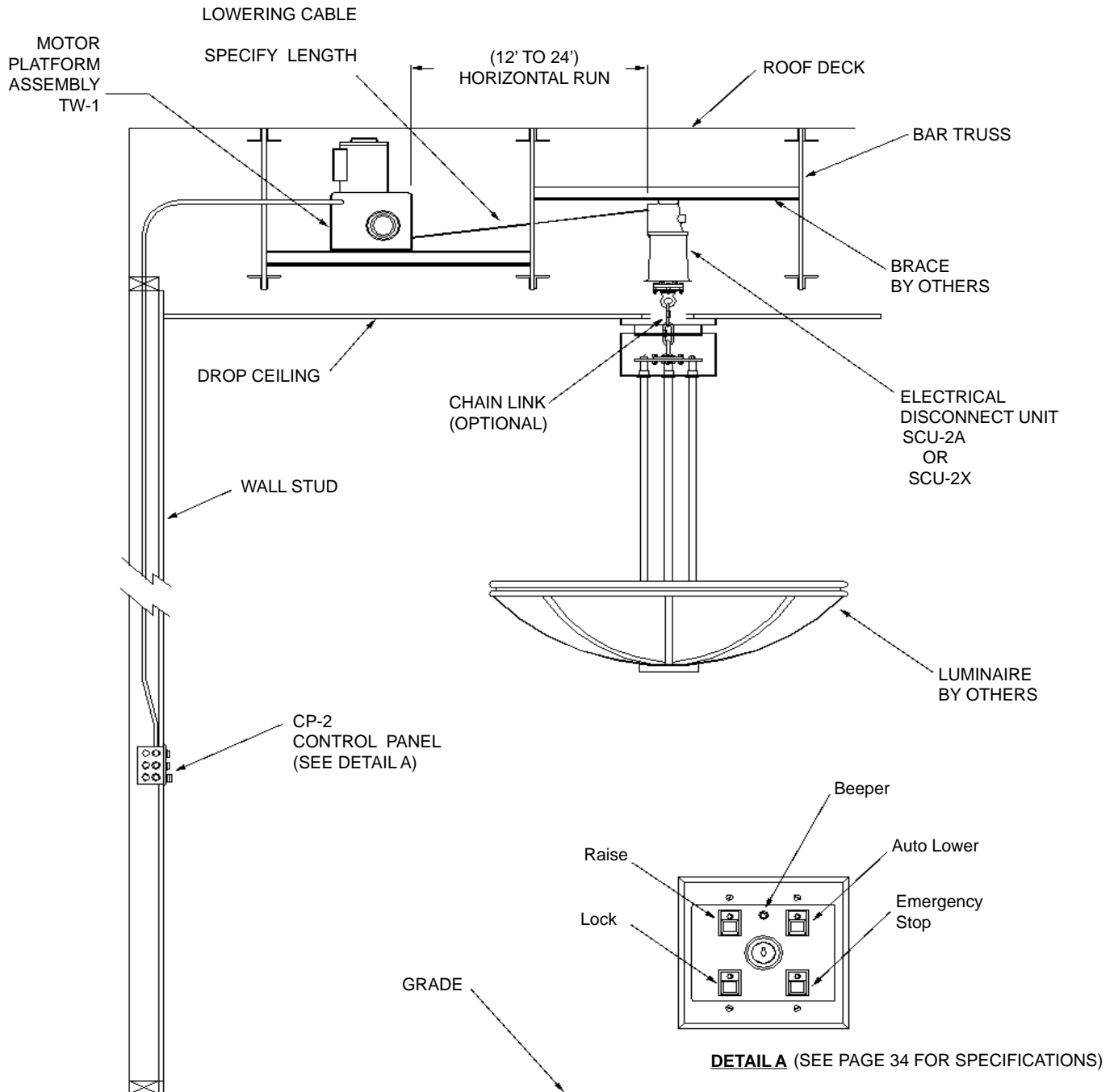


for FIXTURES WEIGHING FROM 251 TO 1100 LBS.

## DROP CEILING - ONE UNIT



SYSTEM SHOWN FOR FIXTURES WEIGHING 251- 400 Lbs.

Typical System Ordering Information					
MLS-400-TW1 (301 to 400 lbs.)		MLS-600-TW1 (401 to 600 lbs.)		MLS-1100-TW1 (601 to 1100 lbs.)	
1	TW-1	1	TW-1	1	TW-1
1	SCU-2A-MS	1	SCU-2X	1	SCU-2X
1	CP-2	1	CP-2	1	CP-2
1	GA4408	1	GA2208	1	GA3308
CAN-8-65 Brass Canopy Option		CAN-12-65 Brass Canopy Option		CAN-12-65 Brass Canopy Option	

# MOTORIZED LOWERING SYSTEMS

## FOR 251-1100 LBS. FIXTURES

### System Specification Sheet

For MLS-400-TW1, MLS-600-TW1 & MLS-1100-TW1

#### Construction

The motor/winch system is compact and lightweight, at 54 Lbs.

All main frame components are powder-coated and all exposed sub-components are plated, for max. corrosion protection.

**Cable Drum** is manufactured from hard-anodized aluminum alloy. Drum is equipped with a pressure roller with torsion spring tensioning, to ensure that the cable bonds on the drum even under slack rope conditions. The drum is supported in composite ball bearings to provide long life, smooth operation and no requirement for lubrication.

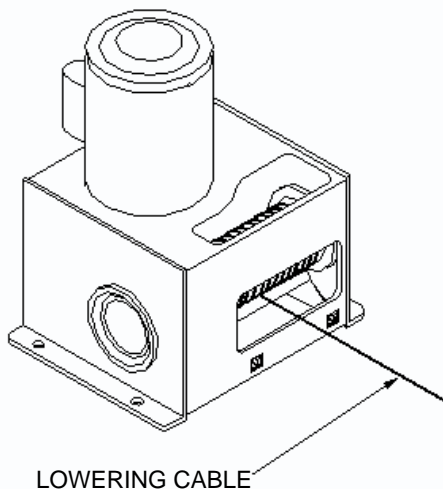
**Winch** employs a double worm reduction system. No oil lubrication is required.

Unique uni-directional worm brake together with the inherently self-locking composite worm drive assure positive dynamic breaking and reliable holding of cable drum.

#### Speed

RPM does not vary from load to full load use.

Linear speed is 12 FPM. at first layer.



#### Motor

3/4 HP. 115 volt, single phase, 60 Hz.

Weight (Lbs.)	Amps	Peak Start Amps.
300	7.0	9.0
400	7.5	9.0
600	8.5	10.0
700	9.0	10.5
900	10.5	12.0
1100	12.0	13.5

#### Cable capacity on drums

3/16" - 70 Feet

1/4" - 50 Feet

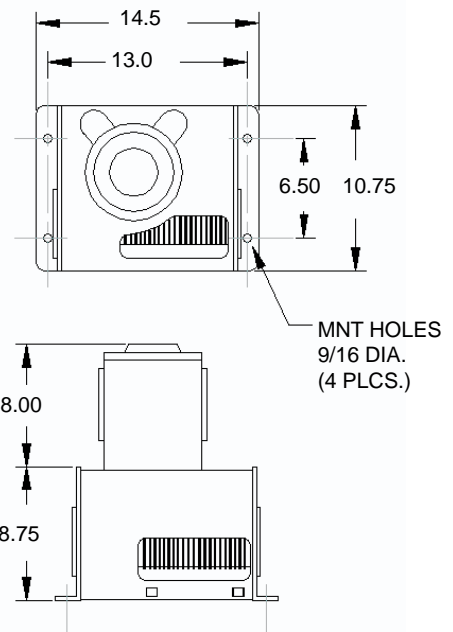
#### Cable strength

We recommend a 7 to 1 safety factor. We supply first quality galvanized aircraft cable in the following diameters.

(Optional Stainless Steel available upon request.)

3/16" - 4200 Lbs.

1/4" - 7000 Lbs.



\*Cables, pulleys, control units must be specified separately. Consult factory for mounting details and wiring design. Each installation must be individually designed.

\*All Lighting & Lowering Systems winch-hoist are designed for material usage ONLY.

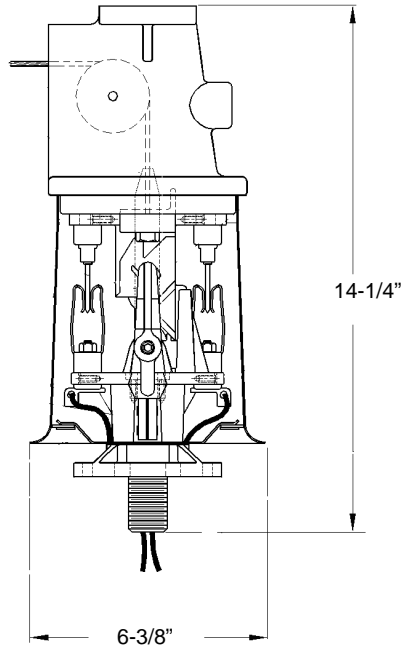
\*All specifications subject to change without notice.

# MOTORIZED LOWERING SYSTEMS

## COMPONENTS

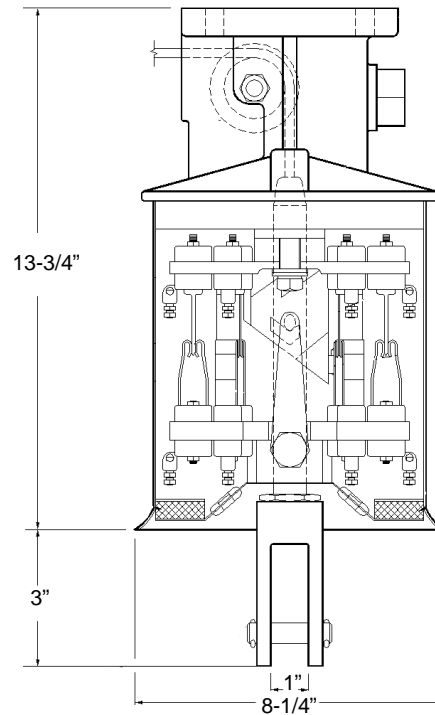
### SCU-2A Disconnect Unit For MLS-400-TW1

SEE PAGE 23 FOR SPECIFICATIONS



### SCU-2X Disconnect Unit For MLS-600-TW1 & MLS-1100-TW1

SEE PAGE 24 FOR SPECIFICATIONS

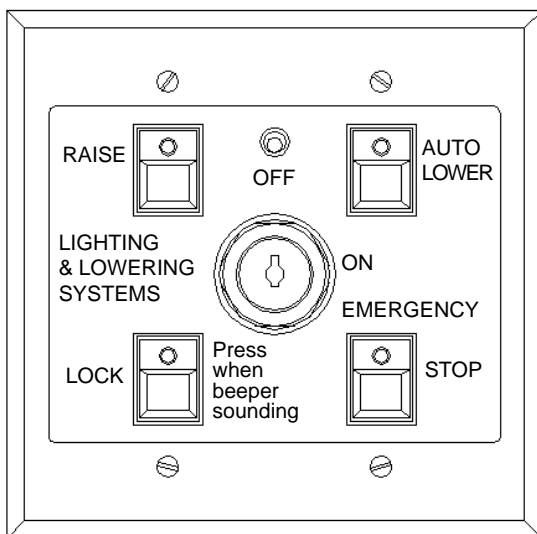


All systems include up to 50 feet of cable. Additional footage is additional cost.

Order by system number and specify cable length

EXAMPLE: MLS-600-125 -----> A system to lift up to 600 Lbs. with 125 feet of cable.

### SPECIFICATIONS FOR CP-2 CONTROL PANEL



- Computerized panel. Programmable lowering distance.
- TEACH switch on front panel in back of wall plate allows for easy programming of Control Panel.
- Key lock power ON/OFF switch.
- Connection Box: 4" Square Double Deep (3 1/4") box provided.
- The Connection Box comes with 1/2" & 3/4" comb. knock outs.
- White Wall Plate Cover provided.
- Operating Voltage: 105V - 135V AC 50/60 Hz @ 1/4 ampere plus motor current.
- Buttons: Momentary switches with LED lights.
- Equipped with Beeper to indicate when fixture has reached the top.
- LOCK button (feature) assures operator that system is mechanically locked. When locked, cable is slack and power to the motor is off

\*All specifications subject to change without notice.